

TOWN OF OXFORD

MUNICIPAL STORMWATER INFRASTRUCTURE OPERATION AND MAINTENANCE PLAN

August 25, 2020



TOWN OF OXFORD

DPW

DEPARTMENT OF PUBLIC WORKS

Municipal Stormwater Infrastructure Operation and Maintenance Plan

1. INTRODUCTION

This Operation and Maintenance (O&M) Plan has been developed by the Town of Oxford to address the municipal stormwater infrastructure operation and maintenance activities and compliance with the U.S. EPA National Pollutant Discharge Elimination System General Permit for Municipal Separate Stormwater Sewer Systems in Massachusetts (MS4 Permit).

This O&M Plan addresses Minimum Control Measure 6, Good Housekeeping and Pollution Prevention for Permittee-Owned Operations, Section 2.3.7.iii. of the MS4 Permit and outlines the procedures that the Town will take to reduce the discharge of pollutants to the MS4 located within the urbanized area. A map of the urbanized area is included in Appendix A. The following activities are covered in this plan:

- Stormwater Control Panel
- Catch Basin Optimization Plan
- Catch Basin Inspection and Cleaning
- Street and Municipally-owned Parking Lot Sweeping
- Proper Storage of Catch Basin Cleanings and Street Sweepings
- Winter Road Maintenance
- Stormwater Structure Inspection and Maintenance Procedures
- Employee Training
- Recordkeeping and Reporting

2. STORMWATER CONTROL PANEL

The Town of Oxford utilizes an online Stormwater Inventory and Tracking System developed by PeopleGIS for members of the Central Massachusetts Regional Stormwater Coalition. This system consists of a Stormwater Control Panel where staff can review, update and process inspection and cleaning data. The Control Panel is located at: <https://www.mapsonline.net/oxfordma/dpw.php>. The town's drainage inventory data was collected in 2010(?) and was transferred into this system. One of the features that PeopleGIS created within the Control Panel is the ability to track catch basin cleanings, depth of sediment removed and catch basins due to be cleaned. The Stormwater Inventory and Tracking System will be used to fulfill the recordkeeping and support the reporting requirements of the Good Housekeeping and Pollution Prevention for Permittee-owned Operations Minimum Control Measure as well as other requirements of the MS4 permit. PeopleGIS continually updates the system with features to aid towns to meet their MS4 permit requirements.

3. CATCH BASIN OPTIMIZATION PLAN

The MS4 Permit requires permittees to establish a schedule with a goal that the frequency of routine cleanings will ensure that no catch basin at anytime will be more than 50 percent full. Refer to Part 2.3.7.a.iii.2. of the MS4 permit.

The permit defines excessive sediment or debris loading as a catch basin sump more than 50 percent full. A catch basin sump is more than 50% full if the contents within the sump exceed one half the distance between the bottom interior of the catch basin to the invert of the deepest outlet of the catch basin.

The Town of Oxford's plan to inspect and optimize cleaning and meet the 50% goal requirement of the permit is outlined in the following steps.

Initial Inspection and Evaluation

- Initially inspect and clean all catch basins within the regulated area annually during the first two years of the permit. Priority will be given to those catch basins located near construction activities such as roadway construction, residential, commercial, or industrial development or redevelopment.
- During these inspections, the depth of the sediment will be recorded and the percentage full in the catch basin sump will be determined. Any basins that are more than 50% full will be flagged. The Catch Basin Inspection and Cleaning Standard Operation Procedures will be followed and all inspection and cleaning data will be recorded.
- After the second year of inspection and cleaning, the recorded depth of sediment and percentage full in the sumps will be analyzed.
- If a catch basin sump is more than 50 percent full during the two initial inspections and cleaning events then the contributing drainage area will be investigated for sources of excessive sediment loading. Sources to look for include construction sites, forest cuttings,

unstable site conditions, industrial or other activities.

- Upon identifying the contributing sources, the Town will take steps to abate the source, to the extent practicable.
- If no contributing sources are found, the inspection and cleaning frequency will be increased to two times per year.
- In addition to the above listed steps to meet the 50% goal for sediment loading, known locations of excessive leaf accumulation will be noted and cleaned after rain events as needed.
- All findings and actions taken will be recorded and documented in the Annual Report.

Ongoing Inspection and Cleaning

- Ongoing catch basin inspection and cleaning will be performed according to Section 4 of this plan.

Annual Evaluation and Reporting

- The Town will annually review the catch basin cleaning records, conduct investigations into excessive sediment loading as necessary and take appropriate actions as outlined above. The frequency of inspections and cleanings will be adjusted accordingly.

4. CATCH BASIN INSPECTION AND CLEANING

The Town of Oxford will inspect and clean all catch basins in the MS4 regulated area at frequencies established through the Catch Basin Optimization Plan described in Section 3 of this plan. Tracking of frequency and inspection/cleanings due will be accomplished through the Stormwater Control Panel described in Section 2 of this plan.

Inspection and cleaning activities will be performed in accordance with the *Standard Operating Procedures (SOP) for Catch Basin Inspection and Cleaning* included in Appendix B of this plan.

Data collected during inspections and cleanings will be entered into the Stormwater Inventory and Tracking System as outlined in the SOP. A Catch Basin Cleaning Log, included in Appendix D of this plan, will be maintained and the total number of catch basins within the MS4 regulated area, number of catch basins inspected and cleaned, and the total volume of material removed shall be documented in the Annual Report.

5. STREET AND MUNICIPALLY-OWNED PARKING LOT SWEEPING

The Town of Oxford sweeps over 90 miles of public streets and 19 municipal parking lots. The map in Appendix A indicates those streets that are within the UA. A list of Municipal Parking Lots is provided in Appendix E. The streets and parking lots are swept two times per year as outlined below.

- Spring sweeping after snow and ice conditions cease, generally April-June
- Fall sweeping after leaf fall, generally between September – November

This frequency schedule meets Section 2.3.7.iii. of the MS4 permit requirement and meets the additional sweeping requirement in areas that discharge to waterbodies with a Phosphorus TMDL for selected French River Basin Lakes and in areas that discharge to waterbodies with an Out-of-State Nitrogen TMDL (French River Basin tributary to the Thames River/Long Island Sound).

Street and parking lot sweeping will be conducted in accordance with the Standard Operating Procedures for Street and Parking Lot Sweeping included in Appendix F of this plan.

A Sweeping Log, included in Appendix G of this plan, will be maintained and the total volume of sweepings will be documented in the Annual Report.

6. PROPER STORAGE OF CATCH BASIN CLEANINGS AND SWEEPINGS

Catch basin cleanings and sweepings are stored at the Rocky Hill Waste Management Facility, Rocky Hill Rd., Oxford. The material is stored in a pile in an area that ensures that there is no discharge to any receiving waters.

The material is transported to a licensed facility by a contractor under State contract. Records of transport are retained at the DPW Headquarters, 450 Main St., Oxford.

7. WINTER ROAD MAINTENANCE

Procedures for winter road maintenance outlined in the attached Winter Road Maintenance Standard Operating Procedure, Appendix O.

8. STORMWATER STRUCTURE INSPECTION AND MAINTENANCE PROCEDURES

Detention Basins

The Town of Oxford currently maintains 12 stormwater detention basins within the urbanized area as listed in Appendix H. A map of the location of each basin is shown in Appendix I. The Town inspects each structure in the late spring, generally in May, to ensure that the basins are operating properly. Potential problems include: erosion within the basin and banks, tree growth on the embankment, damage to the emergency spillway and sediment accumulation around the outlet. Should any of these problems be encountered, necessary repairs should be made immediately.

Inspection and maintenance activities will be performed in accordance with the Standard Operating Procedures for Detention Basin Inspection and Maintenance included in Appendix J of this plan. The Inspection Form shown in Appendix K is used to record detention basin inspections.

Rain Gardens

The Town of Oxford has constructed two rain gardens on municipal properties; one at the Town Hall Parking Lot and one at Carbuncle Beach Park. These rain gardens are inspected twice a year and maintained as necessary. Potential problems include erosion, sediment build up and litter. Standard Operation Procedures for Rain Garden Inspection and Maintenance are included in Appendix L of this plan. The Inspection and Maintenance Form shown in Appendix M is used to record rain garden inspections and maintenance activities.

9. TRAINING

Employee Training for the preceding activities is accomplished by a variety of means including attending programs sponsored by local stormwater coalitions, classroom and field sessions, video trainings and self-guided programs. Employee Training is recorded in the Employee Training Log, Appendix N of this document.

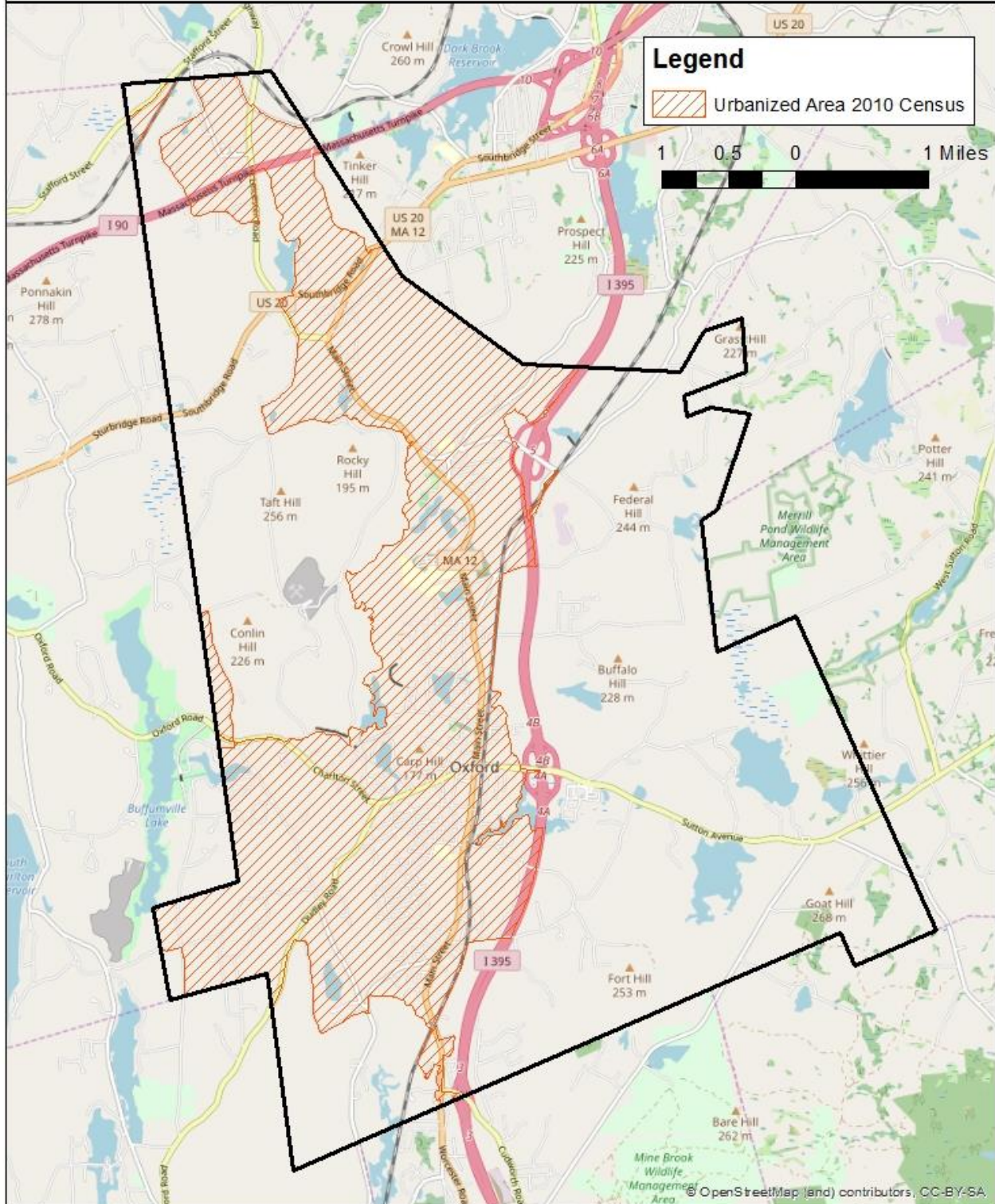
10. RECORDKEEPING AND REPORTING

All inspection and maintenance activities described in the preceding sections are recorded electronically in the Stormwater Inventory and Tracking System described in Section 2 or are recorded on paper forms shown as Appendices to this document.

All inspection and maintenance activities related to the Municipal Stormwater Infrastructure are reported in the NPDES Small MS4 General Permit Annual Report which is submitted to the EPA and MA DEP at the end of each year of the permit (by September 30th).

| | |
|------------|--|
| Appendix A | Urbanized Area Map |
| Appendix B | Catch Basin Inspection and Cleaning Standard Operation Procedures |
| Appendix C | Catch Basin Inspection and Cleaning Form |
| Appendix D | Catch Basin Cleaning Log |
| Appendix E | List of Municipal Parking Lots |
| Appendix F | Standard Operating Procedures for Street and Parking Lot Sweeping |
| Appendix G | Sweeping Log |
| Appendix H | Municipal Detention Basins and Rain Gardens List |
| Appendix I | Municipal Detention Basins Map |
| Appendix J | Standard Operation Procedures for Detention Basin Inspection and Maintenance |
| Appendix K | Detention Basin Inspection Form |
| Appendix L | Standard Operating Procedures for Rain Garden Inspection and Maintenance |
| Appendix M | Rain Garden Inspection Form |
| Appendix N | Employee Training Log |
| Appendix O | Standard Operation Procedure for Winter Road Maintenance |

Town of Oxford Urbanized Area Based on 2010 Census





TOWN OF OXFORD
DPW
 DEPARTMENT OF PUBLIC WORKS

Standard Operating Procedures

Catch Basin Inspection and Cleaning

Issue Date:

6/30/2019

Purpose of SOPs:

Procedures for inspecting, cleaning and maintenance of catch basins, frequency of cleaning, disposal of debris, and recordkeeping to prevent pollution from entering the stormwater drainage systems. This SOP meets the requirements of the Massachusetts Small MS4 General Permit Part 2.3.7.a.iii.2.

Equipment Inventory:

The following is a list of catch basin cleaning equipment:

| Equipment Number | Make | Description | Other Notes |
|------------------|--------------------|-------------|-------------------------|
| Truck 36 | International 7400 | CB Cleaner | Stetco Clamshell Bucket |
| | | | |
| | | | |

Inspection and Cleaning Procedures

Catch basin inspection and cleaning procedures should address both the grate opening and the basin's sump. Document any and all observations about the condition of the catch basin structure and water quality on the *Catch Basin Inspection and Cleaning Form* (attached).

1. Work upstream to downstream.
2. Clean sediment and trash off grate.
3. Visually inspect the outside of the grate.
4. Visually inspect the inside of the catch basin to determine cleaning needs.
5. Measure (in feet) and record Depth to Sediment. Calculate and record Depth of Sediment as follows:
 - Depth of Sediment equals Depth of Sump minus Depth to Sediment.
 If the Depth of Sump has not already been determined for the catch basin, take measurements of the following and record on the Catch Basin Inspection and Cleaning Form:
 - Depth to Bottom of Basin
 - Depth to Lowest Invert
 - Depth of Sump equals Depth of Bottom of Basin minus Depth to Lowest Invert

| | |
|---|-------------------------------------|
| Standard Operating Procedures Catch Basin Inspection and Cleaning | Issue Date: 6/30/2019 |
| <ol style="list-style-type: none"> 6. Inspect catch basin for structural integrity. 7. Visually inspect inside of catch basin for standing water and record height, color and odor on the <i>Catch Basin Cleaning and Inspection Form</i>. 8. Record observations of any possible pollutants or illicit discharges including oil sheen, bacterial sheen, orange staining, foam, sanitary waste, floatables, pet waste, optical enhancers, excessive sediment or any other non-stormwater indicator. 9. Remove sediment from catch basin using clam shell and deposit material into dump truck. 10. If contamination is suspected, collect a sample for chemical analysis to determine if the materials comply with the Massachusetts DEP Hazardous Waste Regulations, 310 CMR 30.000 (http://www.mass.gov/dep/service/regulations/310cmr30.pdf). Chemical analysis required will depend on suspected contaminants. Note the identification number of the catch basin on the sample label, and note sample collection on the <i>Catch Basin Inspection and Cleaning Form</i>. 11. Properly dispose of catch basin cleanings. See following Storage and Disposal section for guidance. 12. If illicit discharges are observed or suspected, notify the appropriate Department (see <i>Standard Operating Procedures for Addressing Illicit Discharges</i>). 13. At the end of each day, document location and number of catch basins cleaned, amount of waste collected, and disposal method for all screenings. Use attached <i>Catch Basin Cleaning Log</i>. 14. Report additional maintenance or repair needs to the Operations Manager. | |
| Maintenance of Cleaning Equipment <ol style="list-style-type: none"> 1. The clamshell truck will be checked for leaks once per week. Immediately contain and properly clean up any spills. 2. Regular preventative maintenance to prolong equipment use such as greasing moving parts and minor adjustments occur a minimum of four times per year. 3. Parts are replaced as needed. 4. Equipment is washed at the DPW garage located at 34 Charlton St., Oxford to trap grease, oils and sediment. | |
| Inspection and Cleaning Schedule <ol style="list-style-type: none"> 1. Catch basin cleaning will primarily take place between the months of April and June. Those catch basins identified as requiring a second cleaning will generally be cleaned between September and November. 2. Priority catch basins are identified according to the <i>Catch Basin Cleaning Optimization Plan</i> and are listed below. The priority catch basin list will be reassessed and updated at a minimum of every spring prior to cleaning and as denoted in the optimization plan. 3. A map of the municipal stormwater system including catch basins is located at https://www.town.oxford.ma.us/sites/oxfordma/files/uploads/oxford_stormwater_map.pdf | |

Standard Operating Procedures

Catch Basin Inspection and Cleaning

Issue Date:

6/30/2019

Priority Catch Basins

Reason

Storage and Disposal

1. If contamination is suspected, the cleanings will be temporarily stored at 34 Charlton St. on an impervious surface. A third party is contracted to handle suspected contamination.
2. Catch basin cleanings are stored at the Rocky Hill Road Waste Facility. The material is removed annually by a third party contractor.
3. Measurement of Volume: The amount of material removed from the catch basins shall be determined daily based on the volume in cubic yards filled in the truck. The amount shall be recorded in cubic yards with a list of the catch basins cleaned in *Catch Basin Cleaning Log*.

Training

1. Employees are trained annually on this procedure and the proper operation of equipment. Employees are also trained on stormwater pollution prevention, spill and response, and illicit discharge detection and elimination procedures.

Record Keeping

1. Records are kept at the DPW Garage, 34 Charlton St., Oxford and in the online *Oxford Stormwater Control Panel* at: mapsonlin.net/oxfordma/dpw.php.
2. A *Catch Basin Inspection and Cleaning Form* (paper or electronic) is completed for every catch basin inspected and cleaned.
3. The *Catch Basin Cleaning Log* is updated daily to record the streets cleaned, number of catch basins cleaned, number of catch basins inspected and the amount of material removed.
4. A list of employees implementing the SOPs and the completion of their training(s) can be found in the *Town of Oxford Good Housekeeping Plan* located at the DPW Headquarters, 450 Main St., Oxford.

Revising the SOPs

1. These procedures are reviewed annually and updated as needed.



Catch Basin Inspection and Cleaning Form

6-30-2019

CB ID#: _____

Inspection Date: _____

Address: _____

Weather Conditions: _____

☐ Dry more than 24 hours ☐ Wet

A. Depth to Sediment: _____ feet

B. Depth to Bottom of Basin: _____ feet

C. Depth to Lowest Invert: _____ feet

D. Depth of Sump (B - C): _____ feet

E. Depth of Sediment (B - A): _____ feet

Is Depth of Sediment (E) > 50% of Depth of Sump (D)? ☐ Yes ☐ No

Is Cleaning Required? ☐ Yes ☐ No

Cleaning Method Used:

☐ Clam-Shell ☐ Vacuum Truck ☐ No Cleaning ☐ Other: _____

Catch Basin Condition: ☐ Good ☐ Fair ☐ Poor ☐ Crumbling

Unusual Water Color? ☐ Yes ☐ No

If yes, describe in comments below.

Unusual Odor? ☐ Yes ☐ No

If yes, describe in comments below.

Observations:

☐ Foam ☐ Oil Sheen ☐ Bacterial Sheen ☐ Orange Staining

☐ Sanitary Waste ☐ Floatables ☐ Pet Waste ☐ Optical Enhancers


☐ Excessive Sediment ☐ Other: _____

Sample of Screenings Collected for Analysis? ☐ Yes ☐ No

Sample of Water Collected for Analysis? ☐ Yes ☐ No

Comments: _____

Inspector's Name: _____

|  <div>TOWN OF OXFORD DPW DEPARTMENT OF PUBLIC WORKS</div> | | Catch Basin Cleaning Log To be filled out daily | | | |
|--|--------|---|------------------|-----------------------------------|-------------|
| Date | Street | # of CBs Inspected | # of CBs Cleaned | Volume of Material in Cubic Yards | Disposition |
| | | | | | |
| | | | | | |
| | | | | | |
| | | | | | |
| | | | | | |
| | | | | | |
| | | | | | |
| | | | | | |
| | | | | | |
| | | | | | |
| | | | | | |
| | | | | | |
| | | | | | |
| | | | | | |

Municipal Parking Lots

| Name | Address |
|-------------------------|------------------|
| Carbuncle Beach | 12 Carbuncle Dr |
| High School | 100 Carbuncle Dr |
| DPW Garage | 34 Charlton St |
| Treasure Land | Church St |
| Chaffee School | 9 Clover St |
| Clara Barton School | 25 Depot Rd |
| Ruel Field | 27 Locust St |
| Fire Dept Headquarters | 181 Main St |
| Town Hall/Senior Center | 325 Main St |
| Library | 339 Main St |
| DPW Headquarters | 450 Main St |
| Middle School | 497 Main St |
| Police Station | 503 Main St |
| North Fire Station | 656 Main St |
| Dog Park | 660 Main St |
| Little League Field | 660 Main St |
| Community Center | 4 Maple Rd |
| North Cemetery | Old Rt 12 |
| RR Ave Parking Lot | Railroad Ave |



TOWN OF OXFORD
DPW
 DEPARTMENT OF PUBLIC WORKS

Standard Operating Procedures

Sweeping Streets and Parking Lots

Updated:

9/11/2020

Purpose of SOPs:

Procedures for the operation and maintenance of street sweepers, frequency of sweeping, disposal of debris, and recordkeeping to prevent pollution from entering the stormwater sewer systems. This SOP meets the requirements of the Massachusetts Small MS4 General Permit Part 2.3.7.a.iii.3.

Equipment Inventory:

The following is a list of street sweeping equipment:

| Equipment Number | Make | Description | Sweeper Speed or Other Notes |
|------------------|-------|----------------|------------------------------|
| NP-41597 | Elgin | Street Sweeper | Leased |
| | | | |
| | | | |

Operations

1. Operate all sweepers and equipment according to the manufacturer's recommended settings, standards, and procedures.
2. While sweeping, drive between the optimal sweeping speed limit, as recorded in the equipment list above.
3. Sweeping will not take place during inclement weather; light rain is optimal.
4. If spills occur or illegal discharges are seen, report to Oxford Fire Department, 508-987-6012 or 508-987-0156.

Maintenance of Equipment

1. Sweepers will be checked for leaks daily.
2. Immediately contain and properly clean up any spills.
3. Regular preventative maintenance to prolong equipment use (such as greasing moving parts and minor adjustments) occurs daily. Grease tubs are filled daily. Machine has an automatic greaser.
4. Parts are replaced as needed. Brushes are replaced when bristle length is less than six inches.
5. Equipment is washed at 34 Charlton St.
6. The hopper is cleaned daily. (Coating in hopper prevents sticking; scraping is not needed.)

Standard Operating Procedures**Updated:****Sweeping Streets and Parking Lots**

9/11/2020

Schedule

1. Street sweeping will primarily take place between the months of April - June, September-November.
2. All streets with curbing and/or catch basins shall be swept a minimum of once per year in the spring (following winter activities). Streets are swept according to type of road. Hot mix asphalt (HMA) roads are swept first in the spring, followed by non-HMA roads.
3. Priority roads and parking lots are identified on the basis of pollutant load reduction potential, based on inspections, pollutant loads, catch basin cleaning or inspection results, land use, impaired or TMDL waters or other relevant factors. These roads and parking lots are listed below and will be swept more frequently as indicated in the table.

| Priority Road/Parking Lot Name (or Category) | Frequency of Sweeping |
|--|-----------------------|
| Sherwood Forest neighborhood | Extra as needed. |
| Rocky Hill Rd. | Extra as needed. |
| Church St. | Extra as needed. |
| | |

The list of priority roads and parking lots will be reassessed every year.

4. The sweeping schedule is assessed annually and updated as necessary.
5. Location of town roads is shown on the Oxford Town Map at <https://www.mapsonline.net/oxfordma/index.html>. Municipal parking lots swept are listed in Appendix E of this document.
6. Events/activities that require special sweeping are parades, PanMass Challenge Bike Ride, road races and other miscellaneous events.

Storage and Disposal

1. Solid sweeping debris is stored at the Rocky Hill Road Waste Facility. The material is removed annually by a third party contractor.
2. Weighing process: The amount of solid sweeping debris is calculated by volume. A full truckload equals 10 yards.

| | |
|--|---|
| <p>Standard Operating Procedures</p> <p>Sweeping Streets and Parking Lots</p> | <p>Updated:</p> <p>9/11/2020</p> |
| <p>Training</p> <p>Employees are trained annually on this procedure and the proper operation of equipment. Employees are also trained on stormwater pollution prevention, spill and response, and illicit discharge detection and elimination procedures.</p> | |
| <p>Record Keeping</p> <ol style="list-style-type: none"> 5. Records are kept at the DPW Garage, 34 Charlton St., Oxford. 6. The <i>Street Sweeping Log</i>, is updated daily to record the streets cleaned and amount of material collected. The log is included in Appendix G of the <i>Municipal Stormwater Infrastructure Operation and Maintenance Plan</i> located at the DPW Headquarters, 450 Main St., Oxford. 7. A list of employees implementing the SOPs and the completion of their training(s) can be found in the <i>Municipal Stormwater Infrastructure Operation and Maintenance Plan</i> located at the DPW Headquarters, 450 Main St., Oxford. | |
| <p>Revising the SOPs</p> <p>These procedures are reviewed annually and updated as needed.</p> | |

| FY20 Street Sweeping Log | | |
|--------------------------|---|-------------------------|
| Date | Street | Volume (cubic yards) |
| 7/8/2019 | Dana Dr Hillcrest Dr Hillcrest Cir Heritage Dr Dana Rd- Underbridge Rollingwood Dr. | 8 |
| 7/10/2019 | Pine Ridge Dr Old Howarth Rd-Partial Cricket Dr Melvin Dr Old Farm Rd Grasshopper Ln | 6 |
| 7/22/2019 | Fort Hill-Lower Jasmine Dr. FortHill Rd- Upper | 10 |
| 7/24/2019 | Holbrook Rd Ester Cir Chris Rd Westview Dr-Finished | 12 |
| 7/30/2019 | George St Rose Ln Allen Ave Crescent St. Sutton Ave Charlton St- for Pan Mass | 10 |

| | | |
|-----------|---|----|
| 8/8/2019 | State St Marshall St Bacon St Hamilton St Ashton St Carey Ln Patton St Nelson St Lambert Ct Lambert Cir Hope Ave Bridge on Dudley Rd | 12 |
| 8/13/2019 | High School Clara Barton School Millbury Rd from Federal Hill Rd to bridge | 10 |
| 8/14/2019 | Spring St Ashworth Dr Mill St | 12 |
| 8/26/2019 | Old Howarth Rd Jillian Rose Dr Kritin Ln Theresa Cir Charlton St at bottom of Conlin Rd Buffum Dam Rd Oakwood Terr | 12 |
| 8/29/2019 | Maple Ave Virginian Ln Cherdon Ln Thayer Ct Pinehill Dr Leicester St(from rte 12 to rte 20) | 8 |

| | | |
|------------|---|----|
| 9/4/2019 | Doldge Ct Drury Ln Country Ln Sunny Hill Rd Old Webster Rd(from Buffum Dam Rd to Asphalt Plant) | 12 |
| 9/10/2019 | Gardner St Howarth Rd | 12 |
| 9/24/2019 | Leicester St | 10 |
| 9/26/2019 | Marilyn Ln Old Webster Rd (from Marilyn Ln to Dudley Line) | 10 |
| 10/25/2019 | Sunset Ave Maid Marion Rd Bounty Rd Friar Tuck Ln Holly St Sherwood Dr Little John Cir Vine St Hemlock St Nottingham Rd Cherry St Aspen Dr Beech St | 12 |
| 10/28/2019 | Main St Front St Elm St East Main St Part of Water St Charlton St(from the Center to Dudley Rd) | 8 |
| 2/24/2020 | Dudley Rd. (from 4 way to Dudley Line) | 25 |

| | | |
|-----------|--|----|
| | Millings | |
| 2/26/2020 | Dudley Rd. (from 4 way to Dudley Line) Charlton St. (from Dudley Rd to Main St) | 8 |
| 3/2/2020 | Main St Front St Elm St Sigourney St Parts of Quobaug Fairlawn Water St Maple Rd | 8 |
| 3/3/2020 | Charlton St Grasshopper Ln Fox Run Oakwood Terr Jillian Rose Dr Kristen Ln Theresa Cir | 16 |
| 3/10/2020 | Buffum Dam Rd Old Webster Rd (from Buffum Dam Rd to Dolge Ct) Drury Ln | 10 |
| 3/12/2020 | Dolge Ct Country Ln Sunny Hill Dr Old Webster Rd (from Doldge Ct to Asphalt Plant) | 8 |
| 3/18/2020 | Dudley Rd (from 4 way to Dudley Line) Old Webster Rd (from Dudley Rd to Asphalt Plant) Marilyn Ln around Islands in front of Comm. Center | 8 |

| | | |
|-----------|---|---|
| 3/20/2020 | Sutton Ave (from Main St to Lower Forthill) Main St (in front of diner) | 8 |
| 3/30/2020 | Sunset Ave Maid Marion Rd Bounty Rd Friar Tuck Ln Nottingham Rd Sherwood Dr Little John Cir Lowes St. Brook St Parts of Cherry St | 6 |
| 4/23/2020 | Town Hall Parking lot Senior Center Parking Lot Sigourney St Freemont St Charlton St (from Barn to Dudley Rd.) | 3 |
| 5/11/2020 | Vine St Hemlock St Finished Cherry St Beech St Aspen Dr Clarence Dr Corey Dr Hazel Way Holly St Matthew Cir Windward Dr French River Cir Leeward Ln Locust St(from Holly St to Wayne Ave) | 8 |

| | | |
|-----------|--|----|
| 5/12/2020 | Wayne Ave Anthony Dr Liberty Ln Blueberry Ln Spruce St Clover St Finished Locust St Wild Rose St June St Birch St Parts of Cypress & Wheelock St | 8 |
| 5/14/2020 | Fairlawn Ave Walnut St Oak St Linden St Wheelock Ct Laurel St Willow St Parts of Weelock St Pine St Cypress St | 8 |
| 5/18/2020 | Old Dudley Rd May St Quobaug Ave Finished Cypress St Pine St Wheelock St Middle School Carbuncle Dr.-Senior Center | 12 |

| | | |
|-----------|--|----|
| 5/19/2020 | Housing for Elderly on Wheelock St Water St New St Columbus St Sibley Cir N. Water St Cedar St Bartlett St Tremont St Senior Center Hall Rd Carlton Ct Part of Main St | 12 |
| 5/20/2020 | Rocky Hill Rd Eddy St Vernon St Hammond St Chaffee Ln Foster St Angel St Rocky Hill Rd Ext. Paige Ln Birchwood Terr Founders Ct Manor Ln Homestead Ave | 10 |
| 5/21/2020 | Main St Jackson Ct Barton St Maple Rd Island on Sutton Ave | 10 |

| | | |
|-----------|---|----|
| 5/26/2020 | Prince St Waite St Gannett St Ballard St West St West Ct Mckinstry Dr Westgate Dr Front St Elm St Part of Forest St | 8 |
| 5/27/2020 | Finished Forest St Spicebush Ln Church St Saad Dr Woodland Dr King St Queen St Highland St Minuteman Ln History Ln Monument Dr | 10 |
| 5/29/2020 | Corbin Rd Camphill Dr Gardner St Howarth Rd Pineridge Dr Melvin Dr | 12 |
| 6/16/2020 | Clara Barton Rd (from Main St to Polonia Dr) Spots on Leicester St the bottom of driveway of dog park Old Depot & Rte 12 Clara Barton School driveway | 10 |

| | | |
|-----------|---|------------|
| 6/17/2020 | Dudley Rd Charlton St Larnard Rd Dudley Rd Conlin Rd Charlton St Beverley St Belmont St Burbank St Bailey Rd Stuart St Depot Rd (from Old Worc to State Barn) Old Worc Rd (from Rte to Depot Rd) | 10 |
| 6/18/2020 | Finished Old Worc Rd Wellington Rd Shady Ln Harvard St Depot Rd(from School to 4 way stop) | 8 |
| 6/24/2020 | Newton Ave Carbuncle Dr High School | 6 |
| 6/30/2020 | Coughlin Rd | 16 |
| | Total Sweepings Collected (cubic yards) | 412 |

Street & Parking Lot Sweeping Log - April 2019 - June 2019

| 2019 Street Sweeping Log | | |
|--------------------------|--|-------------------------|
| Date | Street | Volume (cubic yards) |
| 4/12/2019 | Main St Front St Elm St | 6 |
| 4/17/2019 | High School Middle School Clara Barton School Carbuncle Dr | 4 |
| 4/18/2019 | Chaffee School Community Center | 4 |
| 4/22/2019 | Maid Marion Rd Bounty Rd Friar Tuck Ln Nottingham Rd Little John Cir Sherwood Dr Cherry St School St Ruel Field Main St - Partial | 12 |
| 4/23/2019 | Vine St Hemlock St Aspen Dr Holly St Matthew Cir Winward Dr | 8 |

| | | |
|-----------|--|----|
| 4/24/2019 | French River Cir Leeward Ln Clarance Dr Corey Dr Hazel Way Locust St Wayne Ave Anthony Dr Birch St Spruce St Clover St | 8 |
| 4/25/2019 | North Fire Station Little League Field Maple Ave - Partial | 6 |
| 4/29/2019 | Fairlwan Ave Liberty Ln Blueberry Ln Oak St Wheelock Ct Wheelock St - Partial Pine St Cypress St June St Wildrose St | 10 |
| 5/1/2019 | Linden St Walnut St Willow St Old Dudley Rd Laurel St | 10 |
| 5/8/2019 | Quobaug Ave Wheelock St Pine St May St Cypress St Housing for Elderly Camphill Dr Corbin Rd Monuent Dr Minuteman Ln History Dr | 10 |

| | | |
|-----------|--|----|
| 5/9/2019 | Johnson Ln Carron Ln Winter St Mayfair Cir Pratt Ave Linwood St Hubbard St Lucy Dr Malden Dr Colony Ave Esposito Way Woodlawn Ave | 8 |
| 5/13/2019 | Water St East Main St New St Columbus St Sibley Cir Cedar St N. Water St Tremont St Bartlett St Hall Rd Charlton Ct | 12 |
| 5/14/2019 | West St Gannette St Waite St Westgate Dr West Ct Mckinstry Dr Church St Saad Dr Spicebush Ln Forest St Woodland Dr Higland Ave King St Queen St | 12 |

| | | |
|-----------|--|----|
| 5/15/2019 | Waite St Prince St Ballard St Homestead Ave Paige Ln Founders Ct Manor Ln | 10 |
| 5/17/2019 | Rocky Hill Rd Eddy St Vernon St Chaffee Ln Hammond St Foster St Angell St Rocky Hill Rd Ext Birchwood Terr | 10 |
| 5/20/2019 | Beverly St Belmont St Burbank St Baily Rd Stuart St Shady Ln Wellington Rd | 10 |
| 5/21/2019 | Old Worcester Rd Old Depot Rd Newton Ave Depot Rd - from State pit to Rte 12 Harvard St | 12 |
| 5/22/2019 | Park St Pond St Walcott St Lind St Railroad Ave Freemont St Rawson Ave Maple Rd | 10 |

| | | |
|-----------|--|----|
| 5/23/2019 | Main St Sutton Ave -Rt 12 to Jughandle Front St Elm St East Main St Church St- near cemetery wall | 20 |
| 5/29/2019 | Howe Ave Russell Ln Hugenot Rd- Partial Westview- Partial | 12 |
| 5/30/2019 | Hugenot Rd - Finished Garrison Hgts Rhonda Rheault Dr | 8 |
| 6/3/2019 | Old Merriam Rd Suzanne Dr Michelle Ln | 16 |
| 6/5/2019 | Merriam Rd - finished Wells St Watch St Pleasant St Hartwell St Leicester St - Partial | 12 |
| 6/6/2019 | Pleasant Ct Laurelwood Dr Leicester St - Partial | 12 |
| 6/12/2019 | Old Southbridge Rd - one way only Dudley Rd - from Walnut St to Dudley Line | 10 |
| 6/14/2019 | Carbuncle Dr Carbuncle Parking Lot Millbury Blvd Federal Hill Rd - Rt 12 to RR tracks | 4 |

Town-Maintained Detention Basins within the Urbanized Area

| Basin ID | Street Serviced | Access Address | Property Ownership | Map/Parcel | Latitude | Longitude |
|----------|---------------------------|--------------------|--------------------|-------------|----------|-----------|
| 1 | Deer Hill Rd | 46 Prospect St | private | 07/A03.015 | 42.16824 | -71.88022 |
| 2 | Founders Ct | 1 Founders Ct | private | 29A/C51.34 | 42.13181 | -71.86729 |
| 3 | Manor Ln | 25 Manor Ln | private | 29A/C51.14 | 42.12883 | -71.87151 |
| 4 | Minuteman Ln | 1 Minuteman Ln | private | 33B/A46.011 | 42.11815 | -71.86906 |
| 5 | Monument Dr | 10 Monument Dr | private | 33B/A46.427 | 42.11717 | -71.87063 |
| 6 | Monument Dr | 33 Monument Dr | private | 34A/C46.411 | 42.12081 | -71.87375 |
| 7 | Spring St | 3 Spring St | private | 02/F02.14 | 42.18457 | -71.89206 |
| 8 | Main St - Police Station | 503 Main St | town-owned | 24/A02 | 42.13828 | -71.86806 |
| 9 | Main St - High School | 100 Carbuncle Dr | town-owned | 24/A04 | 42.13806 | -71.8733 |
| 10 | Spicebush Ln | 5 Spicebush Ln | private | 29D/A49.08 | 42.1239 | -71.86967 |
| 11 | Old Webster Rd/Country Ln | Old Webster Rd | private | 32/C01 | 42.11293 | -71.89413 |
| 12 | Misty Meadow Ln | 12 Misty Meadow Ln | town-owned | 48/C04.08 | 42.09569 | -71.90277 |
| 13 | Wayne Ave Ext | Wayne Ave Ext | Private | 46B/B52 | 42.1071 | -71.8763 |

Town-Maintained Rain Gardens within the Urbanized Area

| Location | Access Address | Property Ownership | Map/Parcel | Latitude | Longitude |
|-----------------------|------------------|--------------------|------------|----------|-----------|
| Town Hall Parking Lot | Sigourney St. | town-owned | 07/A03.015 | 42.16824 | -71.88022 |
| Carbuncle Pond Beach | 12 Carbuncle Dr. | town-owned | 29A/C51.34 | 42.13181 | -71.86729 |

The Town-Maintained Detention Basins Map is on the following page.

**TOWN OF OXFORD****DPW****DEPARTMENT OF PUBLIC WORKS****Standard Operating Procedures****Issue Date:****Detention Basin Inspection and Maintenance****Purpose of SOPs:**

Procedures for the inspection and maintenance of municipal detention basins, frequency of activities, disposal of debris, and recordkeeping to prevent pollution from entering waterbodies.

Sedimentation

Sediment accumulation in the basin can affect the original design volume and the proper functioning of the basin. Regular minor sediment removal from the forebay can significantly reduce the frequency of major sediment removal activities that require dredging from the main basin.

Inspection Procedures

Municipally-maintained Detention Basins are inspected annually to ensure ongoing functionality.

5. Site plans for each basin are located at DPW Headquarters, 450 Main St. and are to be reviewed and referred to during the field inspections.
6. Inspect upper stage, side slopes, embankment, lower stage and emergency spillway for structural damage, erosion, overgrowth of vegetation and stabilization.
7. Examine outlet structure for clogging or high outflow release velocities and inspect for structural integrity.
8. Examine inlet energy dissipater rip rap for displacement, erosion and sedimentation buildup.
9. Measure and record depth of sediment in the forebay and basin.
10. Record observations and required maintenance on the Detention Basin Inspection and Maintenance Inspection Form.

| | |
|--|---------------------------|
| <p>Standard Operating Procedures</p> <p>Detention Basin Inspection and Maintenance</p> | <p>Issue Date:</p> |
| <p>Maintenance Procedures</p> <p><i>In addition to any needed maintenance identified during the annual inspection, the following activities are to be conducted annually:</i></p> <ol style="list-style-type: none"> 1. Mow upper stage, side slopes, embankment and emergency spillway. 2. Remove all trash and debris. 3. Remove sediment from the forebay and basin as necessary. Minor sediment removal can be conducted with shovels and smaller equipment without damaging the integrity of the structure. Major sediment removal will require use of a skid steer or back hoe. This work requires the DPW Engineer to assess the situation and ensure design grades and volumes are achieved. 4. Record maintenance activities on the Detention Basin Inspection and Maintenance Inspection Form. <p><i>At least once every five years:</i></p> <ol style="list-style-type: none"> 1. Remove sediment from forebay and basin. | |
| <p>Sediment Disposal</p> <ol style="list-style-type: none"> 3. Sediment debris is brought to the Rocky Hill Road Disposal Facility. 4. Other trash and debris is disposed of in DPW trash receptacle. | |
| <p>Training</p> <p>Employees are trained annually on the inspection and maintenance of detention basins.</p> | |
| <p>Record Keeping</p> <p>Records are kept at the DPW Headquarters, 450 Main St., Oxford.</p> | |
| <p>Revising the SOPs</p> <p>These procedures are reviewed annually and updated as needed.</p> | |



TOWN OF OXFORD
DPW
 DEPARTMENT OF PUBLIC WORKS

| | | |
|---|--|-------------------------|
| Inspection Form Detention Basin Inspection and Maintenance | | Inspection Date: |
| Detention Basin ID: _____ Address: _____ _____ | | |
| Inspector's Name: | | |
| Vegetation Cover Condition: <ul style="list-style-type: none"> <input type="checkbox"/> Vegetation Healthy. No overgrowth. <input type="checkbox"/> Moderate Overgrowth. Mowing, trimming or removal necessary to maintain capacity and flow paths. <input type="checkbox"/> Vegetation Overgrowth presents hazards to inflows, outflows and retention. Maintenance required immediately. <input type="checkbox"/> Comments: | | |
| Visual Assessment of Inlets and Outlets: <ul style="list-style-type: none"> <input type="checkbox"/> Inlets and outlets fully stabilized, no signs of erosion or scour. No repair necessary. <input type="checkbox"/> Inlets/outlets require minor repair or retrofit to control erosion or scour. <input type="checkbox"/> Inlets/outlets show signs of erosion or scour more than 2". Repairs required immediately. <input type="checkbox"/> Comments: | | |
| Sediment Accumulation: <ul style="list-style-type: none"> <input type="checkbox"/> No evidence of sediment accumulation at forebay, base, inlets or outlets. No impacts to outflow. <input type="checkbox"/> Sediment accumulation less than 15% of basin depth or partially obstructing inlet or outlet. No significant impact to outflow. <input type="checkbox"/> Sediment accumulation greater than 25% of basin depth. Maintenance required to remove sediment. <input type="checkbox"/> Depth of sediment: _____ <input type="checkbox"/> Comments: | | |

| | |
|---|---------------------------------|
| Inspection Form Detention Basin Inspection and Maintenance | Inspection Date: |
| Sidewalls and Embankment: <input type="checkbox"/> No evidence of erosion, rodent holes or compromise. <input type="checkbox"/> Minor damage due to erosion or rodent holes. Repair or stabilization is required. <input type="checkbox"/> Evidence of piping through sidewalls due to rodent holes or erosion damage. Immediate repair required. <input type="checkbox"/> Comments: | |
| Presence of Debris or Illicit Activity: <input type="checkbox"/> No debris, litter or evidence of illicit dumping. <input type="checkbox"/> Small amounts of debris or litter removed at time of inspection. <input type="checkbox"/> Significant quantity of debris or litter. Evidence of illicit dumping. Cleanup activity is required. <input type="checkbox"/> Comments: | |
| Perimeter Fencing and Access: <input type="checkbox"/> Perimeter fence and access is secure. <input type="checkbox"/> Perimeter fence or access is unsecure and requires repair. <input type="checkbox"/> Comments: | |
| Description of Photos Taken: | |
| Additional Notes: | |



TOWN OF OXFORD
DPW
 DEPARTMENT OF PUBLIC WORKS

Standard Operating Procedures

Rain Gardens

Issue Date:

6/30/2019

Purpose of SOPs:

Procedures for the inspection and maintenance of Rain Gardens to prevent premature failure. This SOP meets the requirements of the Massachusetts Small MS₄ General Permit Part 2.3.7.a.iii.6.

Inspection

Visually inspect for soil erosion, dead vegetation and sediment buildup twice a year (spring/fall). Use the Rain Garden Inspection and Maintenance Form to record inspection activities.

Maintenance

Maintenance activities are recorded on a Rain Garden Inspection and Maintenance Form.

Spring and Fall Activities:

1. Repair any eroded areas and add supplemental mulch/stone as needed.
2. Shovel out sediment as needed. Dispose of any sediment with catch basin cleanings at the Rocky Hill Road Waste Facility.
3. Remove dead vegetation and dispose of at the Rocky Hill Road Waste Facility.
4. Plant new vegetation as needed.
5. Prune as needed.

Winter Activities:

Do not plow snow into the rain gardens.

Monthly Activities:

Remove trash.

Record Keeping

1. Records are kept at the DPW Headquarters, 450 Main St., Oxford.
2. A list of employees implementing the SOPs and the completion of their training(s) can be found in the *Town of Oxford Good Housekeeping Plan* located at the DPW Headquarters.

**TOWN OF OXFORD****DPW****DEPARTMENT OF PUBLIC WORKS**

| | |
|--|---------------------------------|
| Inspection and Maintenance Form Rain Gardens | Inspection Date: |
| Rain Garden Address: _____ Inspector's Name: _____ | |
| Vegetation Cover Condition: <input type="checkbox"/> Vegetation Healthy. <input type="checkbox"/> Dead vegetation or weeds needing removal. <input type="checkbox"/> Maintenance Conducted: _____ _____ | |
| Visual Assessment of Inlets and Outlets: <input type="checkbox"/> Inlets and outlets fully stabilized and there are no signs of erosion or scour. No repair necessary. <input type="checkbox"/> Inlets/outlets require minor repair or supplemental stone. <input type="checkbox"/> Maintenance Conducted: _____ _____ | |
| Sediment Accumulation: <input type="checkbox"/> Sediment buildup needing removal. <input type="checkbox"/> Maintenance Conducted: _____ _____ | |
| Presence of Debris or Illicit Activity: <input type="checkbox"/> No debris, litter or evidence of illicit dumping. <input type="checkbox"/> Small amounts of debris or litter removed at time of inspection. <input type="checkbox"/> Significant quantity of debris or litter. Evidence of illicit dumping. Cleanup activity is required. <input type="checkbox"/> Maintenance Conducted: _____ _____ | |

| | |
|---|---------------------------------|
| Inspection and Maintenance Form Rain Gardens | Inspection Date: |
| Fencing: <input type="checkbox"/> Fence is intact. <input type="checkbox"/> Fence requires repair. <input type="checkbox"/> Maintenance Conducted: _____ _____ | |
| Other Observations/Maintenance Activities: | |
| Description of Photos Taken and Location: | |

Employee Training Log

| Date | Employee Name | Training Name/Description |
|---------------|--|---|
| YEAR 1 | | |
| 2/14/2019 | Judy Lochner | PeopleGIS Stormwater Control/Quick Assess Workshop, Auburn |
| 4/22/2019 | John Winsky | Catch Basin Cleaning & Inspection Forms and Tablet Use, DPW Headquarters |
| 5/30/2019 | Judy Lochner | IDDE Requirements, On-Line Video |
| YEAR 2 | | |
| 8/12/2019 | Dylan Labelle | Outfall Inspection, Screening, WQ Testing, On-Line Video |
| 9/12/2019 | John Winsky Dylan Labelle | PeopleGIS Stormwater Control/Quick Access Workshop, Auburn |
| 2/26/2020 | Matt Krupsky | Street Sweeping Training (conducted by JoeFallavollita) |
| 4/30/2020 | Mike Lupus | SOP Training Workshop, Online Training, CMRSWC |
| 5/7/2020 | Matt Masiello Jim Esposito | IDDE Training, Online Training, CMRSWC |
| 6/9/2020 | Judy Lochner | MS4 SOP Workshop, Online Training, SRSWC |
| 6/18/2020 | Peter Gerhard | Stormwater Pollution Prevention Plans Workshop, Online Training, CMRSWC |
| YEAR 3 | | |
| 9/17/2020 | John Winsky Dylan Labelle Judy Lochner | PeopleGIS Stormwater Control/Quick Access Workshop, online with Tyler Stearns. Emphasis on new culvert inventory and new updates. |